

JURNY Phantom

SHAPE CUTTING MOTION CONTROL



The most advanced technology in PC-based controls for maximizing productivity, improving quality, and reducing costs!

DEMAND
JURNY

BURNYPHANTOM

SHAPE CUTTING MOTION CONTROL

The new Burny PHANTOM is a completely integrated Control System featuring a PC-based numerical control, 2 or 3 axis drive amplifiers and a comprehensive operators console. The PHANTOM provides the latest advances in CNC technology on a proven platform engineered to increase productivity and reduce costs.

Utilizing Windows® XP Embedded, the PHANTOM produces extremely precise and repeatable motion control and contains many features not found in other numerical controls such as true multitasking and DXF file conversion. The operators console contains functions for up to 6 oxy fuel stations and 2 plasma stations along with markers and auxiliary functions. The PHANTOM also features integrated 2 or 3 axis AC or DC drives.

The Burny PHANTOM can operate any cutting machine and interfaces with virtually all processes including:

oxyfuel, plasma, laser, waterjet, routers, punches, drills, knives and markers. It is available as an upgrade to existing machines or can be delivered on a new machine. Supported by Burny's extensive staff of experienced in-house engineers and service technicians, the PHANTOM is ready to perform for you today!

As a premium member of the Burny family of numerical controls, the Burny PHANTOM continues a 35-year history of improving the productivity and increasing the profits of our worldwide customer base. In addition to our industry leading line of numerical controls, Burny also offers drive systems, AC and DC motors, gearboxes, torch stations and height control systems. Burny is uniquely positioned as a total solutions provider for your motion control requirements. Demand Burny and contact us today to learn more about the value only Burny can provide.



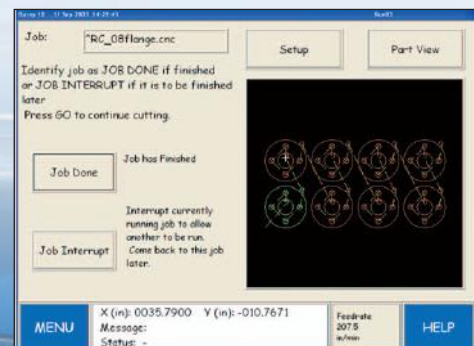
STANDARD FEATURES

Bright Touch Screen Interface

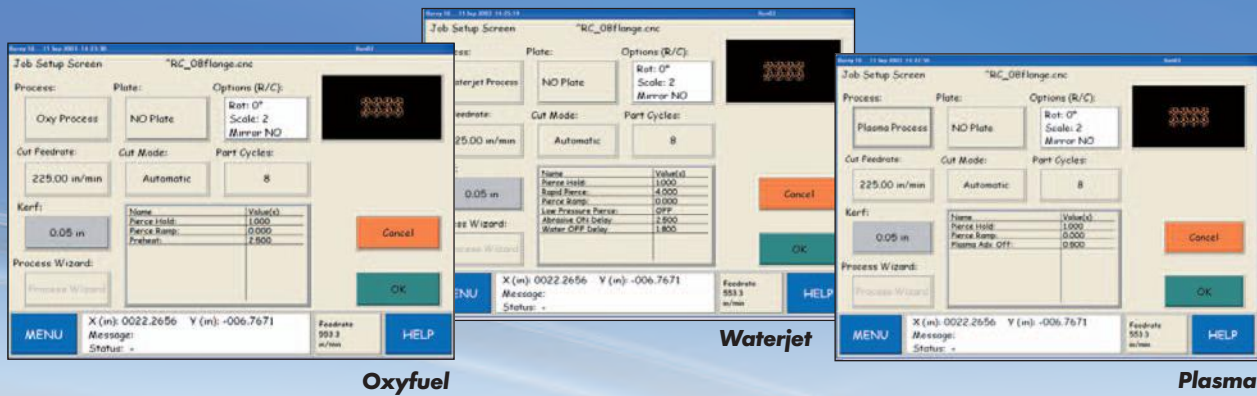
With a 10.4" (264 mm) industrial-grade touch screen, the PHANTOM provides an extremely user-friendly machine interface. The wide viewing angle and high resolution graphics generate a bright display even in the harshest shop floor environment, allowing operators to easily and effectively move through the menus and guide the cutting machine.

Full Color, Interactive Graphic Display

Eliminate dry runs and confirm the part program before cutting them with the PHANTOM's full color graphic display. View the cut path in real-time and monitor cut progress—especially important with underwater plasma. Use the zoom tools to verify part spacing and eliminate wasted or unusable product.



Full Color Graphics



Oxyfuel

Waterjet

Plasma

Process Control

This extremely powerful feature provides precise control over the settings used in oxyfuel, plasma waterjet and other cutting processes. Cutting parameters such as Voltage, Current, Cut Gas, Secondary Gas, Travel Speed, Torch Height and others can be imbedded into the part program. Process Control results in consistent cut quality, the elimination of setup errors, and produces optimum conditions for achieving maximum consumable life and superior cut quality.

Quick Plate Alignment

Quickly compensate for plate that is not aligned properly on the machine. The PHANTOM rotates the part program for proper placement on the true plate position. With a few simple screen prompts the PHANTOM rotates the part program for proper alignment with the plate. Virtually drop the plate and cut. This saves material and wasted time moving the plate into the correct cutting position.

Expandable Shape Library

Allows commonly used standard shapes to be designed right at the control. Touch the screen to input the required dimensions and follow a simple logical prompting process. Shapes are graphically displayed with dimension lines to assist the numeric entry process. A dynamic display draws the shape, which reduces guesswork. Now even complex shapes can be made consistently and accurately.

True Multitasking Environment

Increase operator productivity by performing many different tasks within the Windows® XP Embedded environment. Load a new part program, create or edit a part program, choose a new part program from the shape library, create or edit a program nest, check production messages, fill out productivity sheets, monitor consumables life—all at the same time and all while the machine is cutting!

Fast DXF File Conversion

The PHANTOM accepts direct downloads of CAD/CAM DXF files, which reduces the expense of third-party post processing software. Further, the PHANTOM can automatically assign Lead In/Lead Out positions—or the operator can make these assignments manually.

Go To (Job Interrupt)

Interrupt the current cutting routine to cut a new part, move ahead multiple pierce points, recover from cut loss, recover from power loss, change torch consumables, interrupt a long nest, jump to the end of a part or nest, reverse cutting path—all quickly done at the touch of a button without losing machine position and without scraping valuable material!

Monitor and Track Consumables

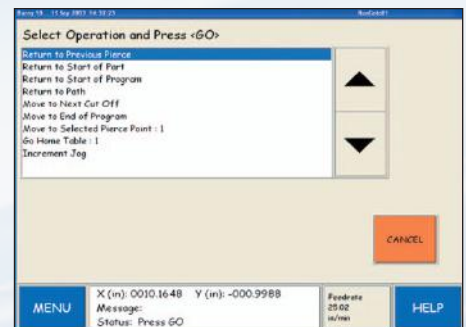
The PHANTOM tracks torch consumable usage and can alert the operator when a consumable change is required. This feature will maximize consumable life and torch life. In addition, cut quality and part accuracy can be held to the highest levels.



Plate Alignment



Shapes Library



Go To



Monitor Consumables

OPTIONS

Networking

Harness the power of network connectivity by quickly accessing remote files and directories directly from the PHANTOM or connect to other computers via the same network. Increase programming flexibility by downloading programs and information from remote locations. With network connection speeds, program transfer takes just seconds, even for large part programs. Further, take full advantage of wireless connections and eliminate potential RF interference and cable maintenance..

MTC's TurboNest® BE

Increases plate utilization by 10% or more! The PHANTOM can be equipped with true shape automatic nesting. Additional cost savings can be realized when TurboNest® BE is used in conjunction with the multitasking feature. The operator simply selects plate size and parts and TurboNest® BE automatically places the parts for an upcoming job, while the machine is cutting. In addition, the PHANTOM can be configured for remnant nesting. Just outline the remnant and use TurboNest® BE to automatically place parts on the remnant plate—quickly turning scrap into dollars!

MTC's JobTrak

MTC's JobTrak allows you to monitor the cutting machine's productivity in real-time. Track actual cutting time, downtime, and receive detailed reports on actual job related costs. JobTrak provides the tools that allow you to pinpoint bottlenecks in cutting efficiency and gives you the ability to increase profits by making informed decisions regarding workflow on the shop floor.

Other Windows® XP Embedded Features



The Burny PHANTOM utilizes Windows® XP Embedded, which provides the ability to take advantage of several productivity tools including remote desktop and USB (Universal Serial Bus) devices. Remote desktop provides the ability to access and operate a remote computer from the PHANTOM while USB memory devices provide easy program transfer at the fastest download speeds available.

HARDWARE PLATFORM

- **Interface: New 10.4" (264mm) TFT USB Touch Screen**
- **Processor: 1 GHz (or faster)**
- **Memory: 512 MB DDR RAM**
- **Operating System: Windows® XP Embedded**
- **Storage Space: 30 GB Hard Drive (or larger)**
- **Connectivity Options: USB, 3.5" Floppy Disk Drive, Networking**
- **Physical Controls: 8 Direction Keypad, Start, Stop, Go To, Reverse, Feedrate Potentiometer, and Operators Console**
- **Operators Console Functions for:**
 - 6 oxy fuel
 - 2 plasma
 - Marker
 - High/low preheat
 - Water spray
 - Provisions for Automatic Oxy-Fuel Ignition
 - Provisions for Oxy-Fuel Height Control
 - Provisions for Plasma Voltage Height Control
 - Auxiliary functions
- **Drive System (Standard):**
 - 2 axis, 250 watt DC drive amplifiers
- **Drive System (Options):**
 - 3 axis 250 watt DC drives
 - 2 or 3 axis AC drives*
 - DC and AC motors
 - High accuracy gearboxes
 - Drive system cables
- **Physical Dimensions: 17.6" (447.7 mm) wide, 19" (482.6 mm) high, 16.5" (419.1 mm) depth**
- **Weight: 65 lbs (29.6 kg)**
- **Power Required: 115/230 Switchable VAC @ 50/60 Hz**
- **Operating Environment: 32 to 122°F (0 to 50°C) 95% Humidity (Non-Condensing)**
- **Partial List of Operating Languages: Swedish, French, Russian, Spanish, Chinese, Italian, Norwegian, and German.**
- **CE Compliant**

* AC Drives available 3rd Qtr 2004



www.burny.com

BURNY Worldwide Headquarters

7550 Hub Parkway
Cleveland, OH 44125
Phone: 800-321-8072 or
216-524-8800
Fax: 216-642-2199

BURNY European Headquarters

Werkstrasse 5
D-64732 Bad König, Germany
Phone: 49 (0) 6063-9314-0
Fax: 49 (0) 6063-9314-44

BURNY Asia Headquarters

Room 433, Block 2
Kwun Tong Factory Estate
Kowloon, Hong Kong
Phone: ++852-2799-5677
Fax: ++852-3193-5677

© 2003 Cleveland Motion Control, All Rights Reserved.
Litho USA 01/04 5M BGDS-Phantom

Windows is a registered trademark of Microsoft Corporation in the United States and other countries.
TurboNest is a registered trademark of MTC in the United States and other countries.