

LC- WELD ROBOT



**WELD.  
CLEAN.  
MARK.**

**Global presence**

**Own manufacture and  
original design**

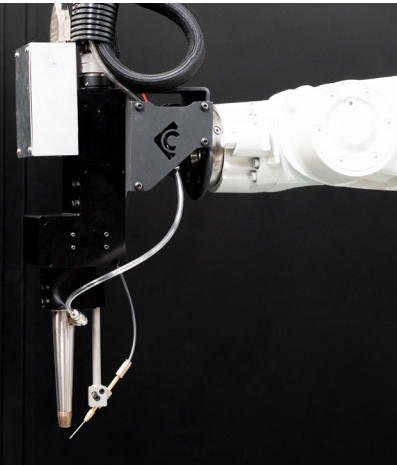
At LC we work to offer the best laser solutions in the world of welding, industrial cleaning and product marking and engraving.

# LC- WELD ROBOT



**LC-WELD ROBOT** is our version of robotic welding, a piece of equipment with many functionalities and controls that allows us to perform different types of welding automatically and semi-automatically

The equipment has a gun designed exclusively by LC Lasers, a 2000w laser generator to be able to work with the necessary power depending on the application and new intuitive software designed specifically for laser welding. This laser head and generator is ready to be integrated into a robot.



**Interchangeable nozzles** for greater work versatility F150, F200 and F250.

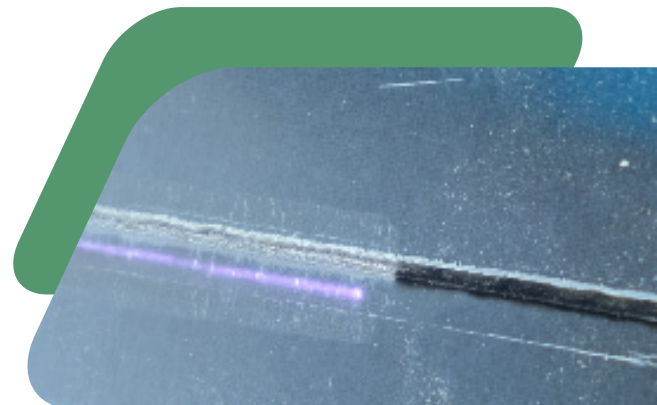
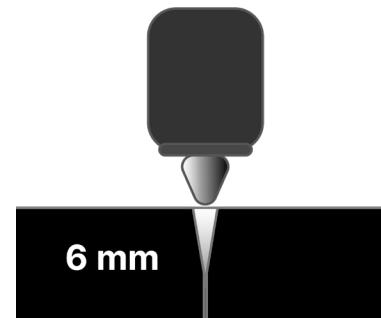
**Clean welding:** It is a very fast welding, very repetitive and precise, clean and with hardly any discoloration.

**Great versatility:** With a great capacity for parameterization and configuration, we can work with a wide range of applications.

**Thread provision:** Removable winder accompanied by a push-pull system installed on the robot itself that allows us to have maximum control of the thread and its position and to have the thread spool far away.

**Laser cleaning:** Parts can be cleaned without having to change the nozzle, since the width that we can configure for the laser reaches up to 10mm. In this way, with the same head, we can clean surfaces.

**Great depth**



Electronics by LC

Welding quality

Speed

2000W



# Software

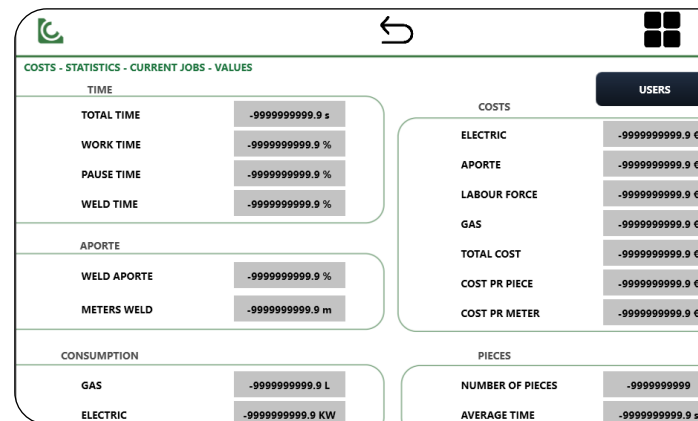
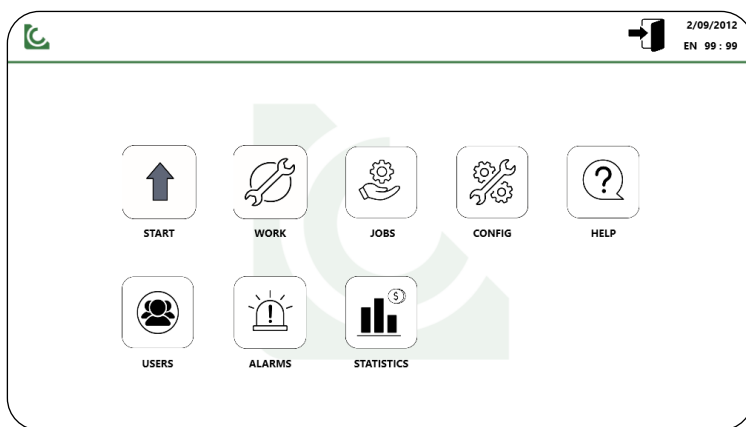
**Users:** Access control with different permissions.

**Welding screen:** Reminder of the use of PPE, laser status indicators and alarms. It does not allow us to start the work if we have an error in the laser or the gas supply.

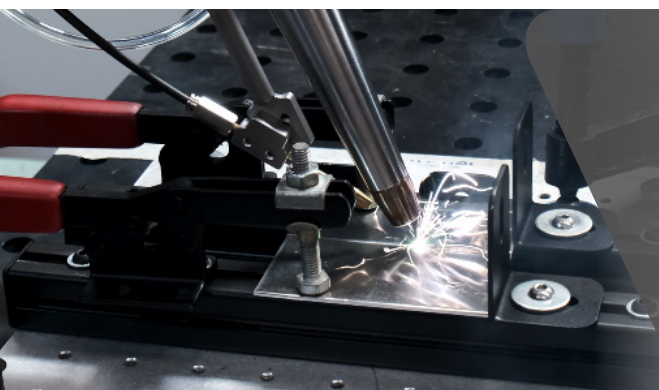
**Work screens:** Integrated software designed and programmed by LC. Intuitive easy.

**Videos and documentation on the device:** We have direct access on the same device to videos about questions, documentation and FAQs.

**Cost control:** general statistics on welding, wire input, gas and work performed.



# Materials



Stainless steel

Galvanised steel

Aluminum

Carbon steel

## WELDING



# Head

Original head designed by LC. Greater accessibility to the work to be done. It contains two galvanometric motors, so, two axes. This allows us to draw many shapes with the laser pointer and adapt to any material. It has a REDUCED WEIGHT so that it is not necessary to have a robot with a high kg capacity to support the work. Made with high quality aluminum. EASY application and INSTALLATION on robots. There are different types of nozzles that change their height along with the appropriate lenses, in order to have a lot of versatility for the job.



## Feeder + Push pull

We have a second motor called push-pull, which helps us to pull the line along its path in the towline and give us greater precision and control over the line itself.

This also helps us to have the wire spool away from our machine, since with this system we can work several meters away.

**Electronic board manufactured by LC**

**Removable winder without the need for an external system**

**Improvement in drag quality**



**Motor with Encoder and made in Italy**

# IBEROBOT



Terminalvägen 15, 861 36 TIMRÅ  
060-573310  
[Office@iberobot.se](mailto:Office@iberobot.se)  
[www.iberobot.se](http://www.iberobot.se)



**Rollers**

Double drive pulley system for aluminum